

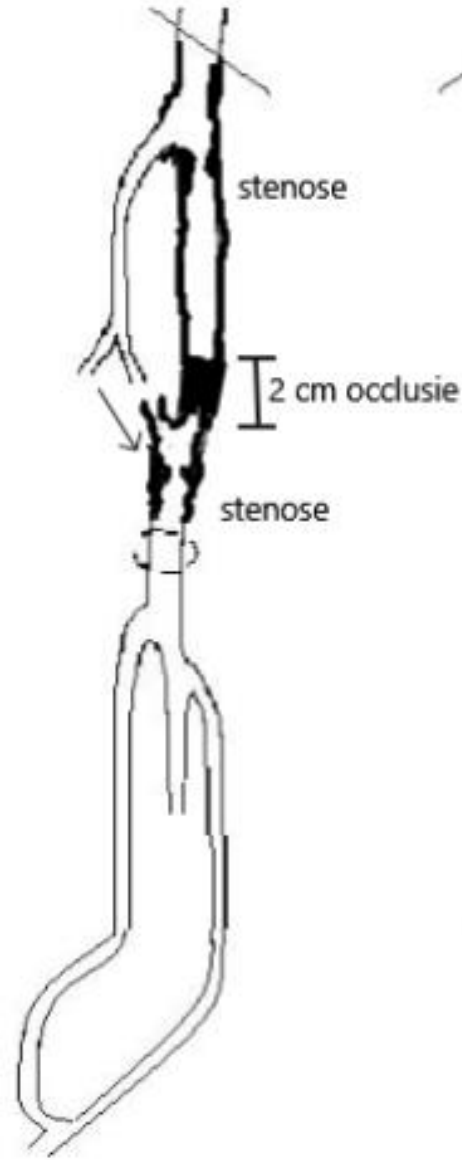
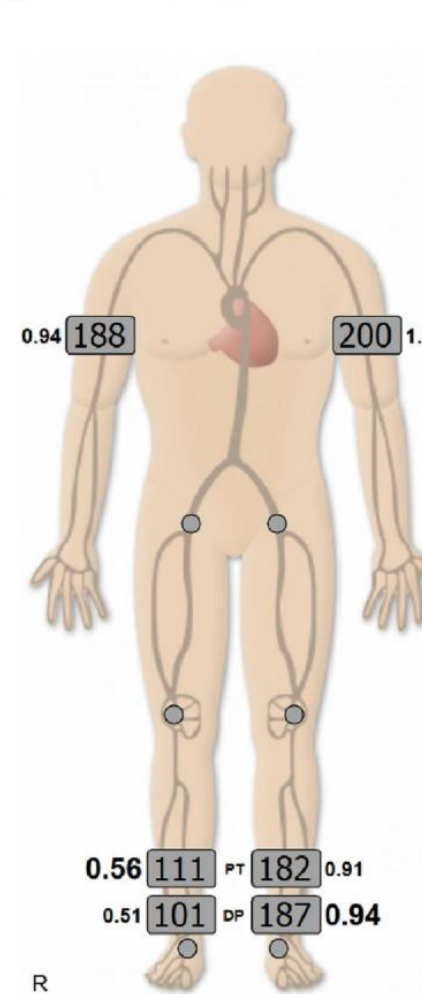
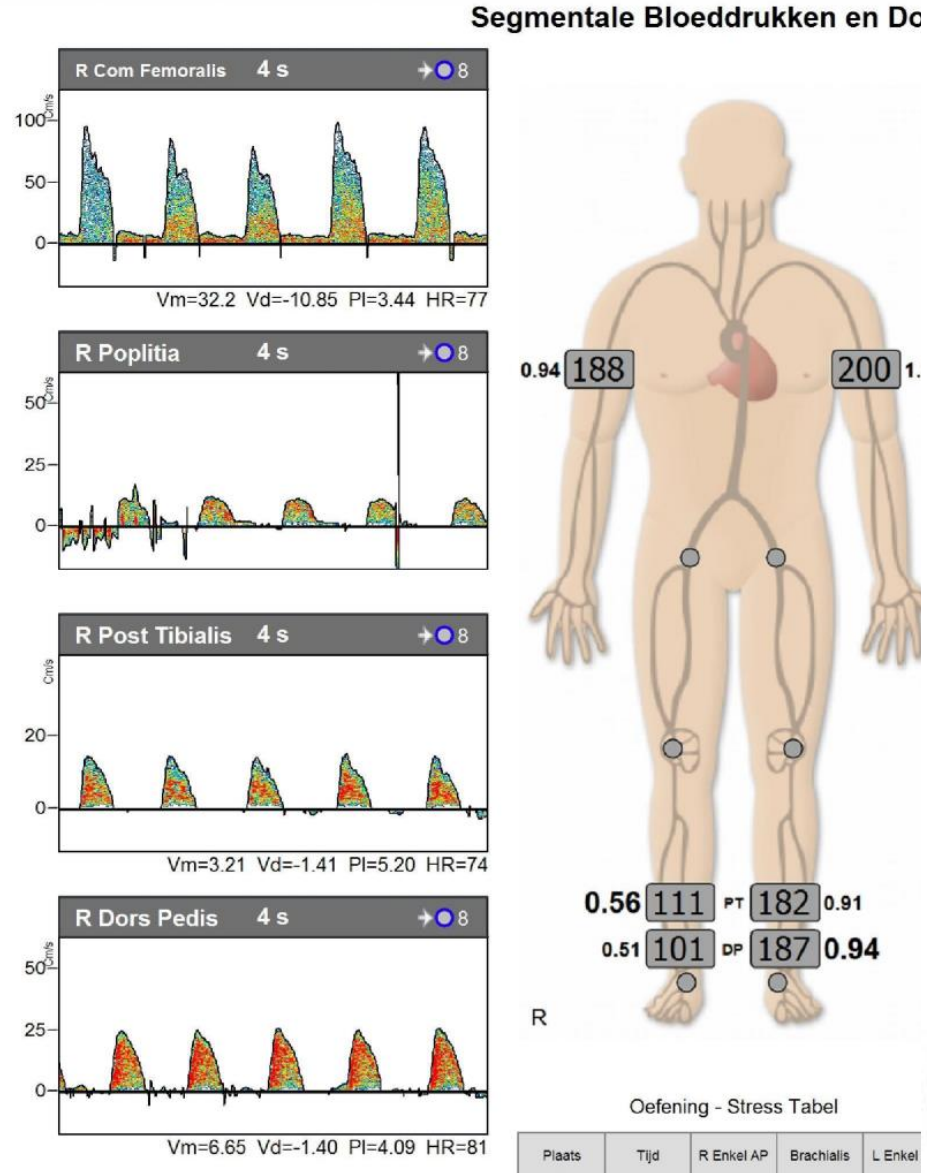
# Case based discussion example

- 69 year old retired bus driver with claudication.
- History: hypertension, CABG 2017.
- Quit smoking 4 years ago.
- Meds: ASA 80 mg, simvastatine 40 mg, nifedipine 30mg, enalapril 5mg
- Lab: Hb 7,3 mmol/L; LDL 3,9 mmol/L

- Intermittend claudication, walking distance 300m.
- Motivated for supervised excersice therapy.



**How to reduce risk of cardiovascular and limb events?**



Oefening - Stress Tabel

Plaats	Tijd	R Enkel AP	Brachialis	L Enkel
--------	------	------------	------------	---------